

# COMMERCIAL



2019

## **Tropicos Beach Club**

Design Team Member – Master Planner

Destination Recreation/ Entertainment  
Masterplan around a 12 Ac “Crystal lagoon”  
Texas City, Houston, TX  
\$250 M, 230 K M<sup>2</sup>/ 2.3M SF  
*Land Tejas Mar Lago LLC, Uri Man, Al Brende*  
2020 (Phase 1)



2018

## **EPIC Systems Corporation**

Concept Design Team Member –  
Master Planner

New Campus Master Planning  
Campus 6 & 7 – “the Village” & “the Resort”  
Verona, WI  
\$250 M, 230 K M<sup>2</sup>/ 2.3M SF  
*Epic Systems Corporation., Judy Faulkner*  
2022

# COMMERCIAL



2018

## **Chongqing Urban Entertainment Center**

Concept Design Team Member

New Waterfront Mixed-Use Project

Chongqing, PRC

\$X M,500 K M2

*Riverside Group*



2014

## **Clockenspiel Restaurant**

Concept Design Team Member

New Restaurant for Everland Theme Park

Guest Experience Story Boards

Seoul, SOUTH KOREA

\$10M, 3 K M2

*Samsung Everland*

2015



2011

## **Lotte World Retail Bazaar - Remodel**

Design Team Leader

Renovation of Existing Retail at Park Entrance

Concept Design thru Design Development

Seoul, SOUTH KOREA

\$30M, 50 K M2

*Lotte World Corporation*

2012

# COMMERCIAL

2009



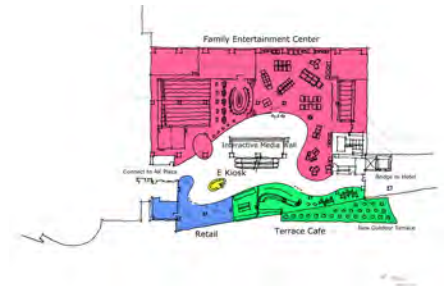
## Lawry's New California Center

New Food Based Entertainment Venue  
Los Angeles, California  
\$300M, 75 K SF  
*Lawry's Restaurants Inc., John M. Heil*

Concept Design Team Member

## AK Plaza

New Entertainment Center Proposal for  
Existing Commercial Center/ Train Station  
Seoul, SOUTH KOREA  
*Ms. Nina Ahn*



Concept Designer



## The Farm at Dillidio

New Shopping Center Development  
San Luis Obispo, California  
\$ 1.5 B, 2.5 M SF



Concept Design - Illustrations

# COMMERCIAL

2009

## MAGPORT

New International Container Shipping  
Terminal- Commercial Mixed-Use Center  
New Orleans, Louisiana  
\$ 1.5 B, 2.5 M SF  
*Deep Water Projects, Inc. (Phase 1)*



Concept Design Team Member

## International Town Center

Mixed-Use Development Proposal  
New Orleans, Louisiana  
\$ 1.5 B, 2.5 M SF  
*Deep Water Port Corporation*



Concept Design Team Member

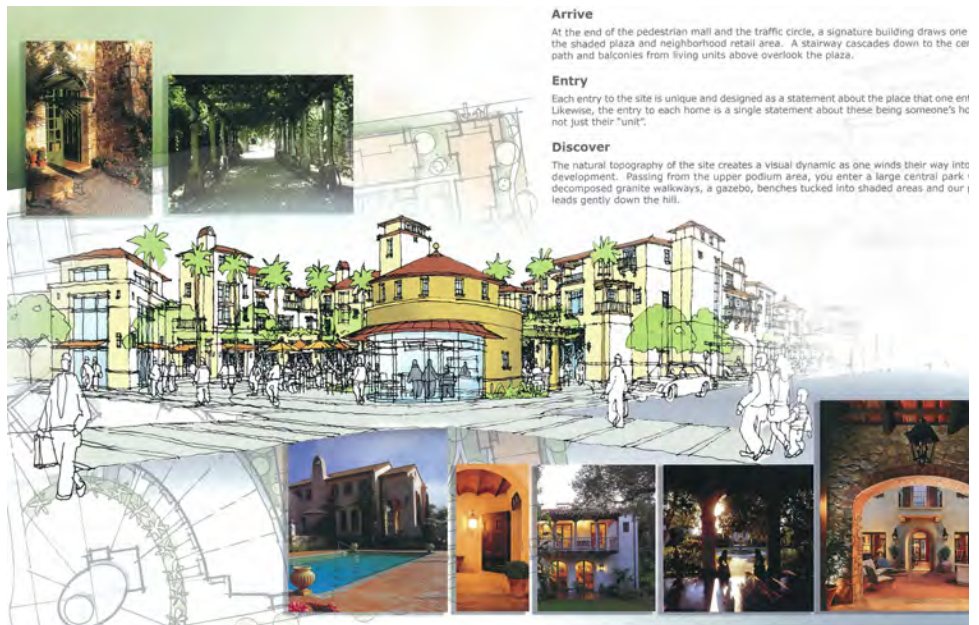


2008

## KT C3 Entertainment Center

New Media Studios and Destination  
Entertainment Center  
Near Seoul, SOUTH KOREA  
\$ 500M, 1M SF  
*Korea Telecom Special Projects Group*

Concept Design Team Leader



### Arrive

At the end of the pedestrian mall and the traffic circle, a signature building draws one the shaded plaza and neighborhood retail area. A stairway cascades down to the car path and balconies from living units above overlook the plaza.

### Entry

Each entry to the site is unique and designed as a statement about the place that one enters. Likewise, the entry to each home is a single statement about these being someone's home not just their "unit".

### Discover

The natural topography of the site creates a visual dynamic as one winds their way into development. Passing from the upper podium area, you enter a large central park decomposed granite walkways, a gazebo, benches tucked into shaded areas and our leads gently down the hill.

**The Village at Rolling Hills**  
New Mixed-Use Development  
Palos Verdes, California  
\$200M, 100K SF

Invited Competition Runner-Up



Bird's eye view (Phase 2)

**MBC Corporate Headquarters**  
New Office and Broadcast Studios  
Ilsan, SOUTH KOREA  
\$ 1.5 B, 2.5 M SF  
*Munhwa Broadcasting Corporation*  
(Un-Built)

**WINNER**  
Invited Competition- Design Team Leader

# COMMERCIAL



2007

## **Siksa Condominium UEC Project**

New Commercial Center

Siksa, SOUTH KOREA

\$ 1.2 M, 60 K SF

*Siksa Housing Corporation*

Project Designer



## **Yongyu and Muui**

Commercial, Entertainment Complex

Yongyu Island, SOUTH KOREA

\$ 200.0M, 500 K SF

*Yong Yu Development Corporation*

Project Design Team Member

2005

## **The Orchard**

New Regional Retail Center

Antioch, California

\$ 750K, 150 K SF



Project Design Team Member

## **Huntington Beach Shoreline**

Proposed Retail, Entertainment Complex

Huntington Beach, California

\$60 M, 200 K SF



Project Designer

# COMMERCIAL

2004



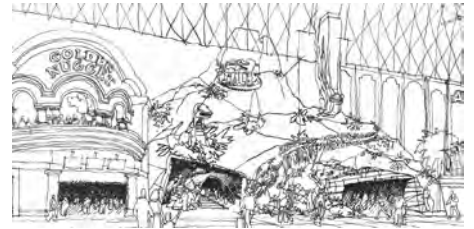
## **Cantina Corona**

Restaurant Concept Prototype  
Multiple Locations Worldwide  
*Cantina Corona*

Project Designer

## **T REX**

Restaurant / Bar  
Freemont Street, Las Vegas, NV  
\$ 12M, 200 seat restaurant  
*Steve Schussler*



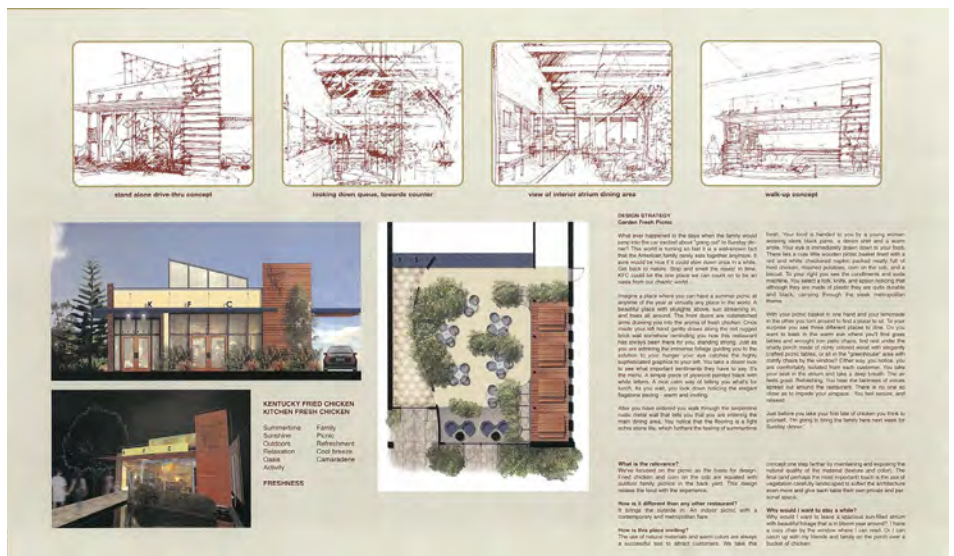
Preliminary Concept Sketch



## **the Ice Castle**

Nouveau Cuisine Russian Concept Restaurant  
Encino, CA  
\$ 4.0 M, 7.8 K SF  
*Albert Mozels, Alex Mozels*

Project Manager/ Designer



2004

## K F C Re-branding

Global Multiple Team Re-branding exercise  
Multiple locations worldwide  
*Yum! Corporation*  
(Pending)

Concept Design Team Leader

## Broadway at the Beach

Various Retail, Entertainment Venues  
Myrtle Beach, South Carolina  
\$ 4.0 M, 120K SF  
*Burroughs and Chapin, Mr. Tom Jones*  
2005

Design Team Leader  
thru Construction Documents

2003



## The MEGA Wheel

"World's Largest Wheel" Project  
Proposed Ride, and Entertainment  
Development  
Las Vegas NV  
\$ 60 M, 250 K SF  
*MEGA Inc. LLC, Danny Socolov, Neil Miller*

Concept Design – Team Member  
With Furneaux- Stewart

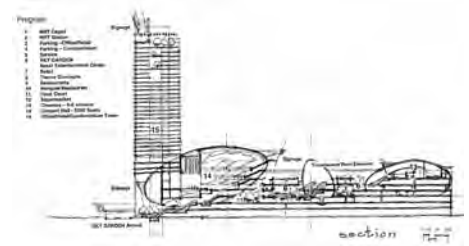


# COMMERCIAL

2002

## MRT Site Redevelopment

New Multi- Theater Entertainment Destination  
above Existing Hsintien Depot, and Rail Yard  
Taipei, TAIWAN  
\$ 2.0 B, 90 K M2  
*MRT/ Sherman Cheng/ CB Commercial*



Concept Designer

## Epic Systems Corporation

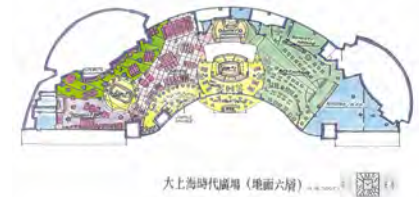
New Corporate Office Development  
Madison, Wisconsin  
\$ 9 M, 450 K SF (Total Office)  
*Judy Faulkner*  
2004 (Phase 1)



Design Team Member - Renderings

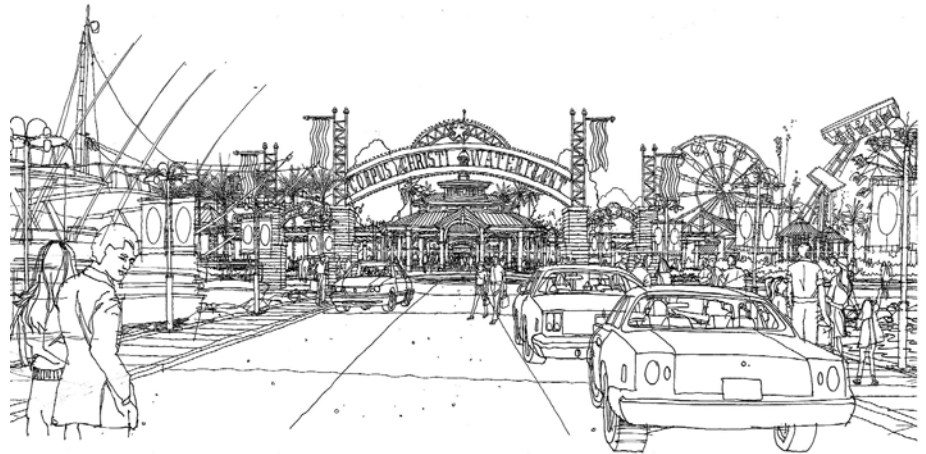
## “Time Square”

Retail Redevelopment for Existing Towers  
Shanghai, CHINA  
\$ 30 M, 150 K SF (Total)  
*Sherman Cheng/ CB Commercial*



Concept Design

Co



## The Texas Boardwalk

Master Plan Multiple Restaurant Development  
including: Midway, and Parking  
Corpus Christi, TEXAS  
\$ 900 M, 720 K SF  
Landry's Restaurants Inc. Jonathan Stampely

## WINNER

**Invited Developer Proposal Competition**  
Concept Designer

2001

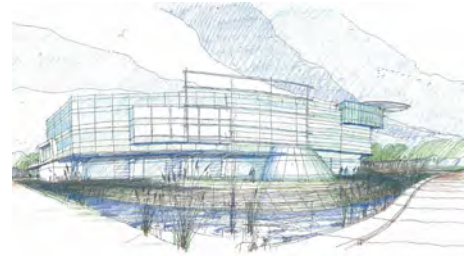
## The Bridges of Chung Fu

Office/ Retail Connections Concept  
Chung Fu, CHINA  
\$ 15 M, x 200 SF (Total)  
*Sherman Cheng/ CB Commercial*

Concept Design

**500 Golf Course Drive**

Office/ Retail/Theater Development  
Brainerd, MN  
\$ 12.0 M, 13 K SF (Total)  
Arne Johnson



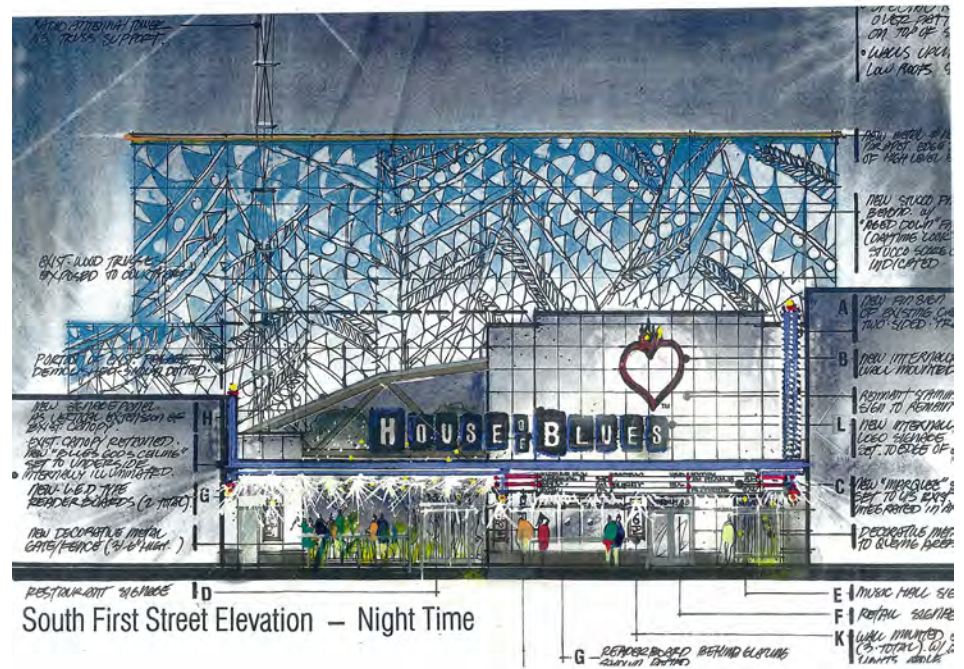
Concept Design

**Rainforest Cafe**

Restaurant, Dark Ride, and Parking Structure  
Galveston, TEXAS  
\$ 12.0 M, 15 K SF  
Landry's Restaurants Inc. Jonathan Stampley  
2003



Exterior Concept Design



South First Street Elevation – Night Time

2000

**House of Blues**

San Jose, California  
\$ 7.2 M, 4.1 K SF  
HOB Entertainment, Inc. / Liam Thornton  
Idletime Network Inc / Molly Rose  
(Un-Built)

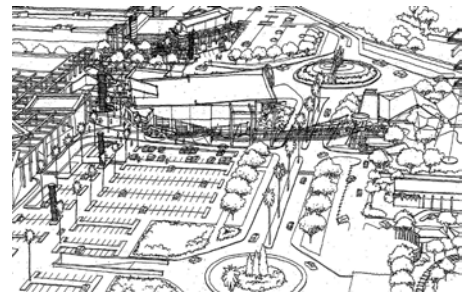
Concept Designer  
Concept through Construction Documents

# COMMERCIAL

2000

## Nassica

VANS Indoor Skateboard Park  
Getafe, (Madrid), SPAIN  
\$ 5.0 M, 5.5 K M2  
*Omoly, Antonio Garcia*  
2003



Concept Design Team

## 3220 Winona Avenue

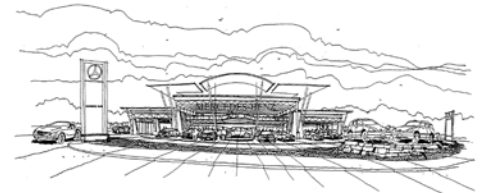
Multi-Tenant Office Building  
Burbank, California  
\$ 17 M, 102 K SF  
*ATI Systems International, Inc.*



Schematic Design  
Design Team Coordinator

## Lone Star Mercedes-Benz

Renovation to New Corporate Model  
Winnipeg, Manitoba  
\$ 800 K , 10 K SF  
*Lone Star Mercedes-Benz*  
*Mr. Ed Danlychuk*  
2000



Design Team Member  
Rendering

1999

## Parque de Ocio Universitario

Urban Entertainment Center  
Alcoron- Madrid, SPAIN  
\$ 250 M, 114,500 M2  
*Rioparque - S.L. Rio Fisa, Trizec Hahn*

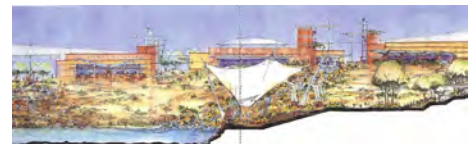
## Invited Competition Runner-Up

Concept to Design Development  
Project Team Designer



## Dos Lagos

New Retail Entertainment Center  
Corona, California



Concept Design Team Member

# COMMERCIAL

1999

## Lone-Star Harley Davidson Dealership

New Flagship Store and HOG Room

Winnipeg, Manitoba

\$ 650 K, 850 M2

*Mr. Ed Danlychuk*

1995 2000



Project Architect

Partial demolition of industrial building for Expansion, and New Construction

1998

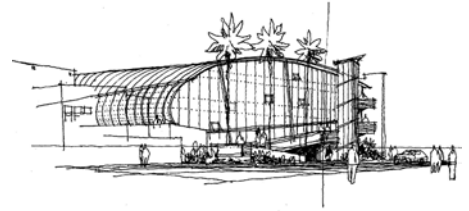
## 2140 Pontius Avenue

New Office Building

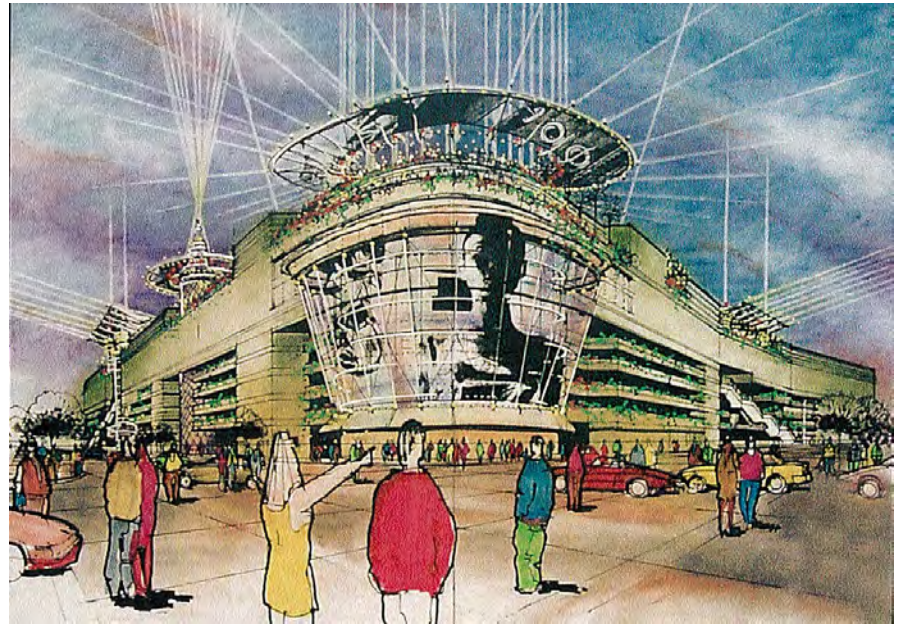
Santa Monica, California

\$ 2.0 M, 20 K SF

*Samuel Goldwyn Center*



Preliminary Design



1998

## The Beverly Center

Concept Ideation

Beverly Hills, California

\$ 25 M, 150 K SF

*The Taubman Group*

*Carl Hagelman*

Concept Design Team Member

New Concept for Repositioning of Existing High-End Retail Complex with: Metavision.

## Geo. C. Hopkins Construction Co.

New Headquarters

New Construction and Renovation

Glendale, California

\$ 550 K, 7.0 K SF

*Geo. C. Hopkins Construction Co .ltd*

*Gary Hopkins*

1999



Concept / Design Development  
Owner Self- Build Project

# COMMERCIAL

1997

## Rainforest Cafe

New Construction/ Addition  
Ontario Mills  
Ontario, California  
\$ 3.8 M, 15 K SF  
*Rainforest Cafe Inc.*  
1998



Exterior Design Concepts

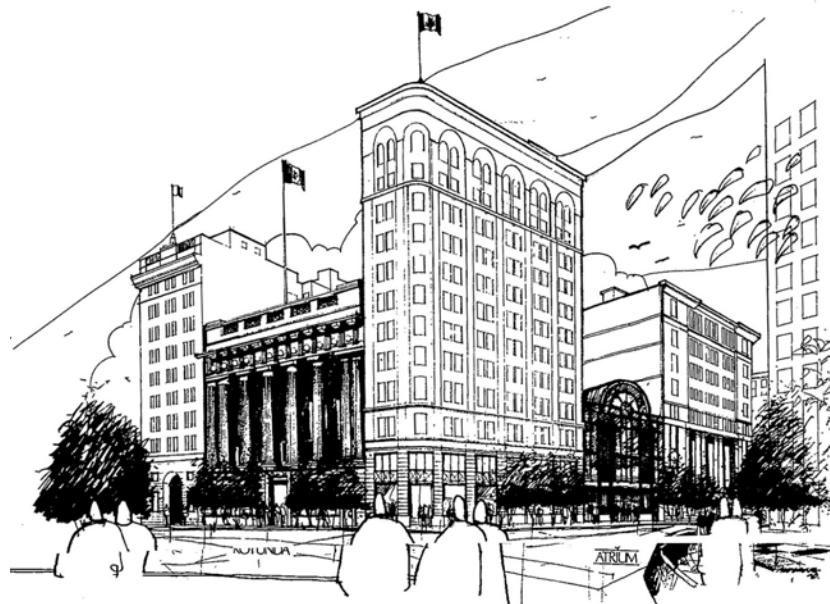
1996

## Whitey's

New Restaurant  
East Grand Forks, Minnesota  
\$ 1.2 M, 8 K SF  
*Whitey's Ltd.*  
1998



Concept Design



1995

## The Atrium

### at Portage and Main

Site Development Proposal  
Winnipeg, Manitoba  
\$ 4.0 M, 1600 M2  
*Mr. Helmut Sass*

Project Team

Concept Design for Urban Development,  
encompassing four Heritage Buildings

## Northwest Public Library Proposal

Winnipeg, Manitoba  
\$ 1.2 M, 1365 M2  
*Pace Greentree Homes Ltd.*  
*Guy Hobman*



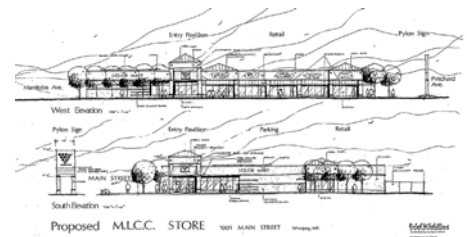
**Invited Design-Build Competition  
Runner-Up**  
with Ralph W. Schilling, Architect.

# COMMERCIAL

1994

## M.L.C.C. Outlet, and Retail Mall

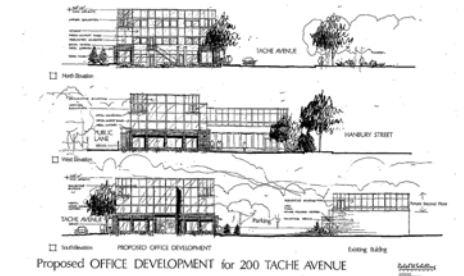
Winnipeg, Manitoba  
700 M2 Outlet, and 500 M2 Retail/ Office  
\$ 900 K, 1200 M2  
*Guldestar Developments*  
1995



Project Architect  
Design through Contract Administration for  
Owner/ Project Manager.

## S.E.G. Phase Two

New Three Story Office Building  
Winnipeg, Manitoba  
\$ 630 K, 900 M2  
*S.E.G. Engineering Ltd.*



Project Architect - Preliminary Design

## Gimli Mall

New Retail / Office Facility, and  
Renovated Existing Retail  
Gimli, Manitoba  
\$ 750 K, 1200 M2  
*Dr. Ernest Stephanson*  
1995

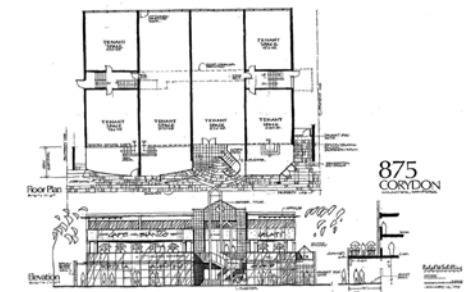


Project Architect  
Design through Contract Administration

1993

## 875 Corydon Avenue

Additions and Renovations  
Winnipeg, Manitoba  
\$ 400 K, 110 M2 (New)  
*875 Corydon Ltd.*  
1994



Project Architect  
Conversion of existing 3-story apartment  
building to retail use.

1992

## Cabin Creek Lodge

Environmental Resort  
La Broquerie, Manitoba  
*Bill and Anne Cudney*

Architectural Consultant  
Ambitious Owner/ Self-build project;  
including: timber lodge and cabin, stone  
solar ring

1991

## Selkirk Mall

Commercial Developer Proposal Call.  
Selkirk, Manitoba  
\$ 5.0 M, 12.5 K M2  
*Winfield Properties*

Site Master plan

# COMMERCIAL

1991

## 1190 St. James Street

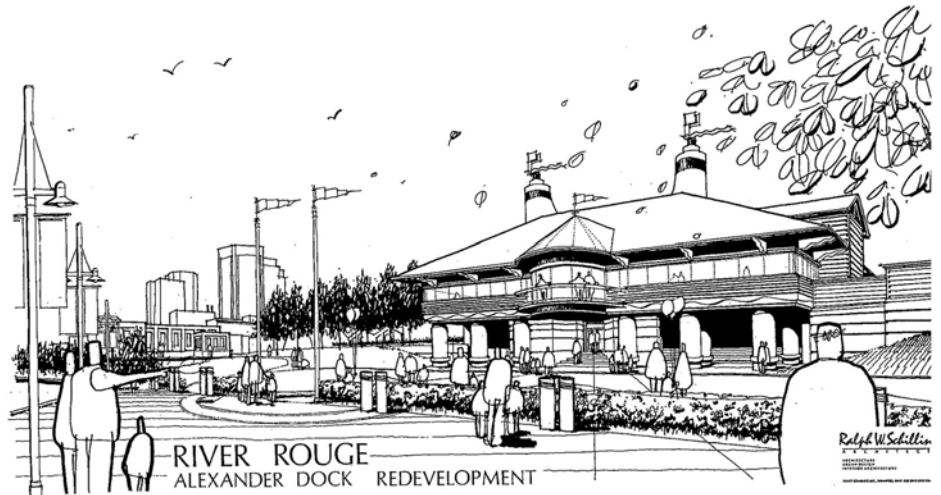
Fashion Outlet Mall  
Winnipeg, Manitoba  
\$ 600 K, 3000 M2  
*Mr. Don Parks*  
1990

Project Architect  
Conversion of existing warehouse.

## Pump House Office

Condominium Office Building  
Winnipeg, Manitoba  
\$ 5.6M, 8K M2  
*Dorchester Developments Ltd.*

Project Team  
Preliminary Design for Riverside Project

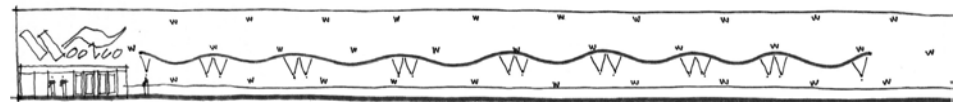


## River Rouge

Cruise Ship / Bus Tour Headquarters  
Alexander Dock  
Winnipeg, Manitoba  
\$ 300 K, 300 M2  
*Mr. Jack Neaman*  
(various proposals - un-built)

Project Architect

1990



## Woolco Store

(now WALMART)  
Dryden, Ontario  
\$ 4.8 M, 6.0 K M2  
*Concord Projects, Mr. Ted Petkau.*  
1990

Project Architect  
Consultants to Owner/Contractor for  
Phase One of commercial development

## Dryden Mall

Commercial Development  
Dryden, Ontario  
\$ 6.5 M  
*Winfield Properties*

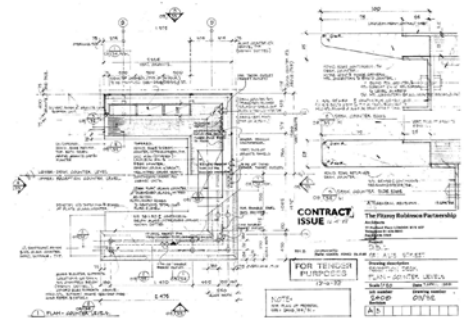
Project Team  
Preliminary Site Planning.

# COMMERCIAL

1988

**Drexel Burnham Lambert**  
Commercial Headquarters Building Fit- Out  
London, ENGLAND

*Drexel Burnham Lambert UK*  
1989



Project Team Member  
With Fitzroy Robinson Partnership

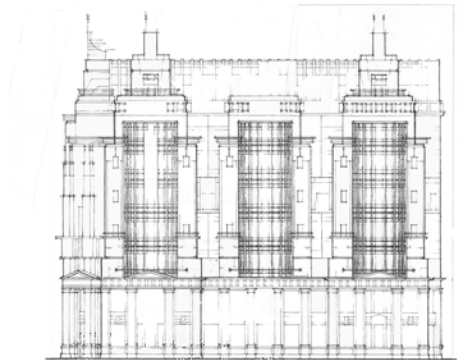


1988

**British Telecom Thamesway**  
District head Office Proposal  
Reading, ENGLAND  
\$ 425 M, 16,500 M2 net  
*British Telecom P.L.C.*

**Invited Competition-Runner-Up**  
Project Designer  
with Fitzroy Robinson Partnership

**“the Three Kings**  
Commercial Development Proposal  
Re-use of existing historic facades  
London, ENGLAND



Project Designer  
with Fitzroy Robinson Partnership



# COMMERCIAL

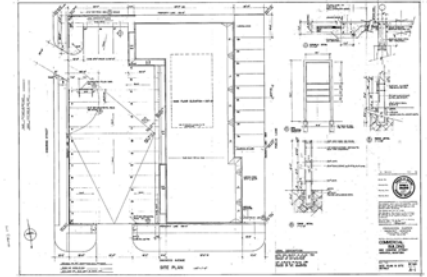
1988

**Courts of St. James**  
Commercial Mall Interior Renovation  
5K SF  
Winnipeg, Manitoba  
1986

Architectural Designer/ Technician

1987

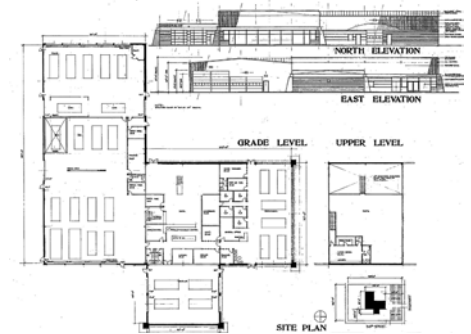
**660 Osborne Street**  
Commercial Development  
7.5K SF  
Winnipeg, Manitoba



Architectural Team Member

1986

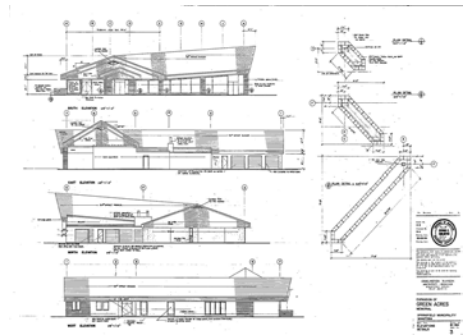
**Fowler Auto Dealership**  
Commercial Development  
7.5K SF  
Brandon, Manitoba  
1987



Architectural Designer/ Technician

1985

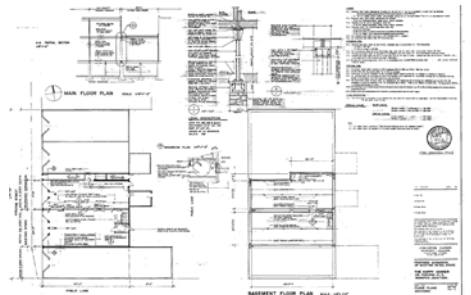
**Green Acres Funeral Home**  
Expansion of Existing Facility  
20K SF  
Brandon, Manitoba  
1986



Architectural Designer/ Technician

1984

**The Happy Cooker**  
Expansion of Existing Store  
2K SF  
Winnipeg, Manitoba  
1984



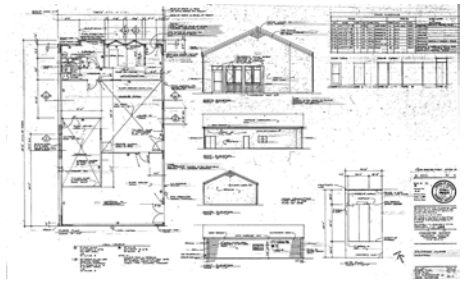
Architectural Designer/ Technician

# COMMERCIAL

1984

## Kildonan Glass

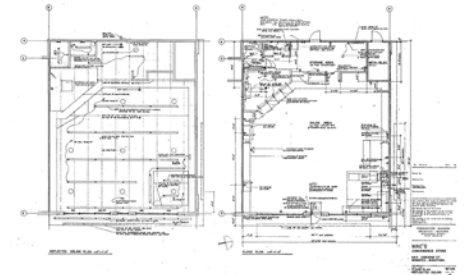
Expansion of Existing Store  
3K SF  
Winnipeg, Manitoba  
1984



Architectural Designer/ Technician

## Mac Convenience Store

Tenant Improvements  
1.5K SF  
Winnipeg, Manitoba  
1984



Architectural Designer/ Technician

## Manitoba Marketplace

Proposed Public Market Project for Historic  
District  
100K SF  
Winnipeg, Manitoba



Architectural Designer

## Park Realty

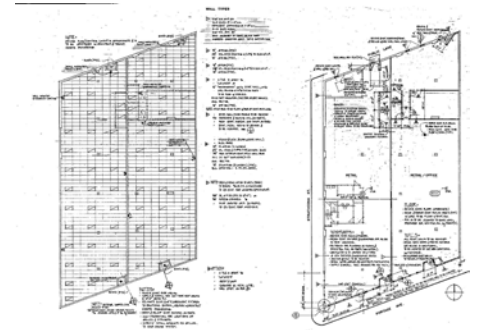
New Office Building for Real Estate Company  
District  
10K SF  
Winnipeg, Manitoba



Architectural Designer

## Portage and Strathcona

New Commercial Building  
3K SF  
Winnipeg, Manitoba



Architectural Designer/ Technician

# COMMERCIAL

1984

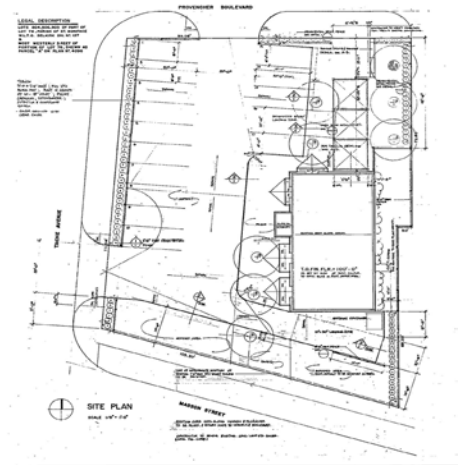
## Restaurant at 650 Tache

Renovation of Existing Building for New Use

3K SF

Winnipeg, Manitoba

1985



Architectural Designer/ Technician

## St. Mary's and Kingswood

New Commercial Building

3K SF

Winnipeg, Manitoba

1985



Architectural Designer/ Technician

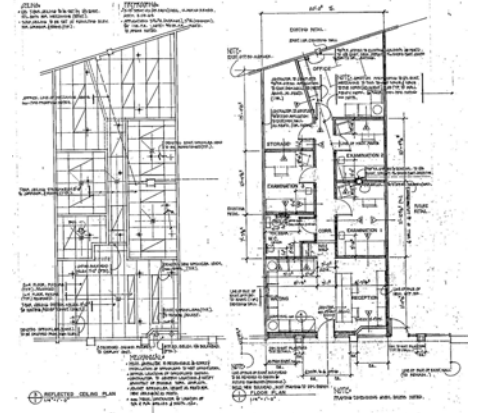
## Doctor's Office - Courts of St. James Mall

Tenant Improvements

1.5K SF

Winnipeg, Manitoba

1985



Architectural Designer/ Technician

