

INTERIORS



2018

Hotel Transylvania – Dark Ride Exit Retail

Dream Island Indoor Theme Park

\$250K, 10 K SF

Regions Group

2020



Concept Designer

2009

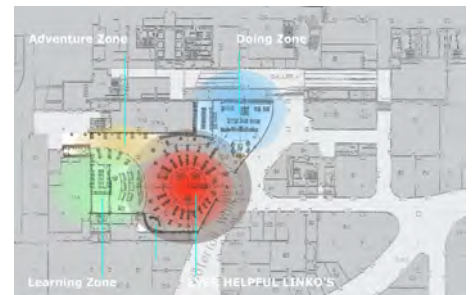
LINKO's- COEX

New Flagship Store Concept

Seoul, SOUTH KOREA

10 K SF

Linko's Corporation



Concept Designer

2004

NASCAR Speedpark- Mills- Xanadu

Meadowlands, NJ

\$500K, 40 K SF

Burroughs and Chapin Co.

Tom Jones, Dale Locklair

Concept Designer/ Team Co-coordinator

NASCAR Speedpark- Mills-Pittsburgh

Pittsburgh, PA

\$500K, 40 K SF

Burroughs and Chapin Co.

Tom Jones, Dale Locklair

Lead Designer/ Team Co-coordinator

Through Construction Documents

2003

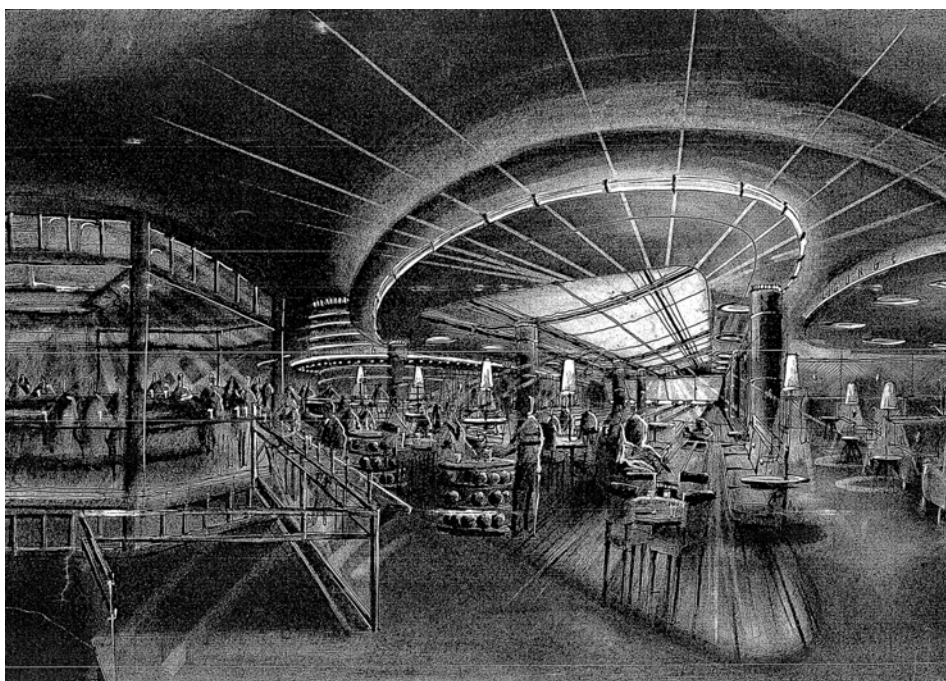


Gameworlds Long Beach

Facility includes new Event Lounge Facility
Long Beach, CA
\$7.6 M, 41 K SF
Sega Gameworlds L.L.C.
Ron Lam, John Leggitt
2003

Lead Designer/ Team Co-coordinator
Through Construction Administration

2001



Gameworlds Block - E

Facility includes new Bowling Concept
Minneapolis, Minnesota
\$6.5 M, 35 K SF
Sega Gameworlds L.L.C.
Ron Lam, Ron Bension, John Leggitt
2002

Lead Designer/ Team Co-coordinator
Through Construction Administration

INTERIORS

2001

Gameworks Newport

Newport, Kentucky

\$5.8 M, 30 K SF

Sega Gameworks L.L.C.

Ron Bension, John Leggitt

2002



Lead Designer/ Team Co-coordinator
Through Construction Administration

Gameworks Seattle

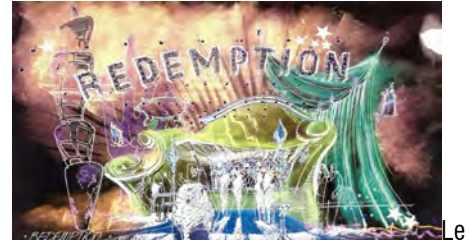
Interior/ Exterior Remodel

Seattle, Washington

\$1.1 M, 35 K SF (Total Project)

Sega Gameworks L.L.C.

Ron Bension, Mark Stutz



Lead Designer/ Team Co-coordinator
Through Construction Documents

Boxing "Hall of Champions"

Retail Entertainment Venue

Las Vegas, Nevada

\$ 9.0 M, 35 K SF

Milstein Realty Investors.

2001



Initial Concept Design Team Member
Presentation Renderings

2000

Warner Bros. New Theme Park

Hollywood Boulevard, Retail Interiors

Madrid, SPAIN

45 K SF

Warner Bros.

2002



Schematic through Design Development

Skycable

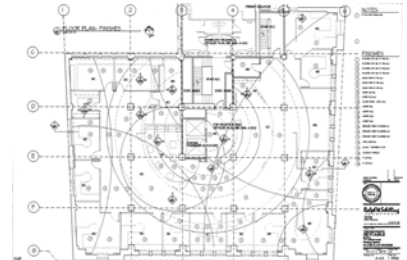
New Corporate Headquarters

Winnipeg, Manitoba

\$ 170 K (Office), 7.1 K SF

Skycable Ltd.

2000



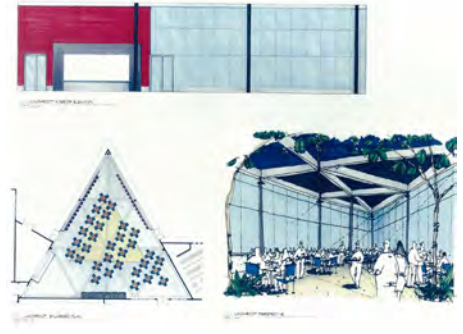
Concept Design
Through Construction Documents.

INTERIORS

2000

Guess Corporation – Headquarters

Louisville, Kentucky
\$ 1.2M (Office), 120 K SF
Guess Corporation
2000



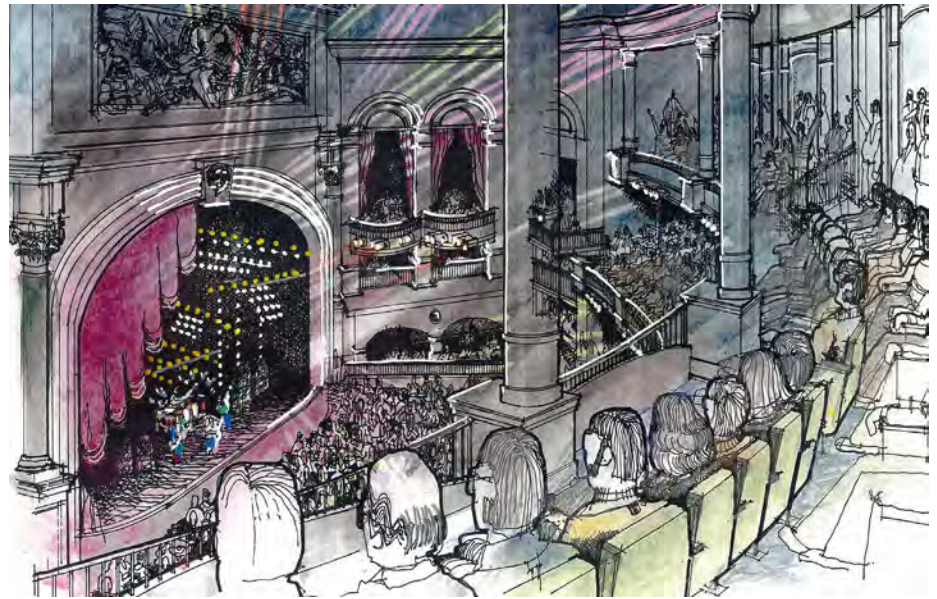
Lead Designer/ Team Co-coordinator
Through Construction Documents

Gameworks

New Restaurant Concept
125 Seats Sawgrass, FL
160 Seats Woodfield, ILL
200 Seats Easton, OH
\$650 K, 3.5 K SF (Woodfield)
Sega Gameworks, L.L.C.
1999



Concept Designer
Prototype, and Multi-Location Design



The Club at the Venetian (now C2K)

New Theatre / Night Club Concept
The Venetian Casino and Hotel
Las Vegas, Nevada
\$ 20 M, 80 K SF
Club Venetian Ltd

Design Team Member
Presentation Drawings

1999

TV Cafe

Restaurant/ Retail Concept
Caesar's Forum
Las Vegas, Nevada
\$ 5.0, 20 K SF
Paramount Entertainment Corp..

Initial Concept Team Member
Presentation Drawings

INTERIORS

1998

"Hannah-Lu-Lu's"

Entertainment Restaurant Prototype

\$ 2.0 M, 10 K SF

"Hannah-Lu-Lu", Ltd.

Initial Concept Team Member

"Cafe Odyssey"

Restaurant Concept Prototype

Mall of America

Bloomington, MN

Hotel Discovery Ltd.

1998

Initial Concept Team Member

Caddy shack

Entertainment Restaurant Prototype

the Murray Brothers

Initial Concept Team Member

Billboard LIVE!

New Nightclub Concept

Miami \$ 7 M, 20 K SF, Orlando \$ 9M,

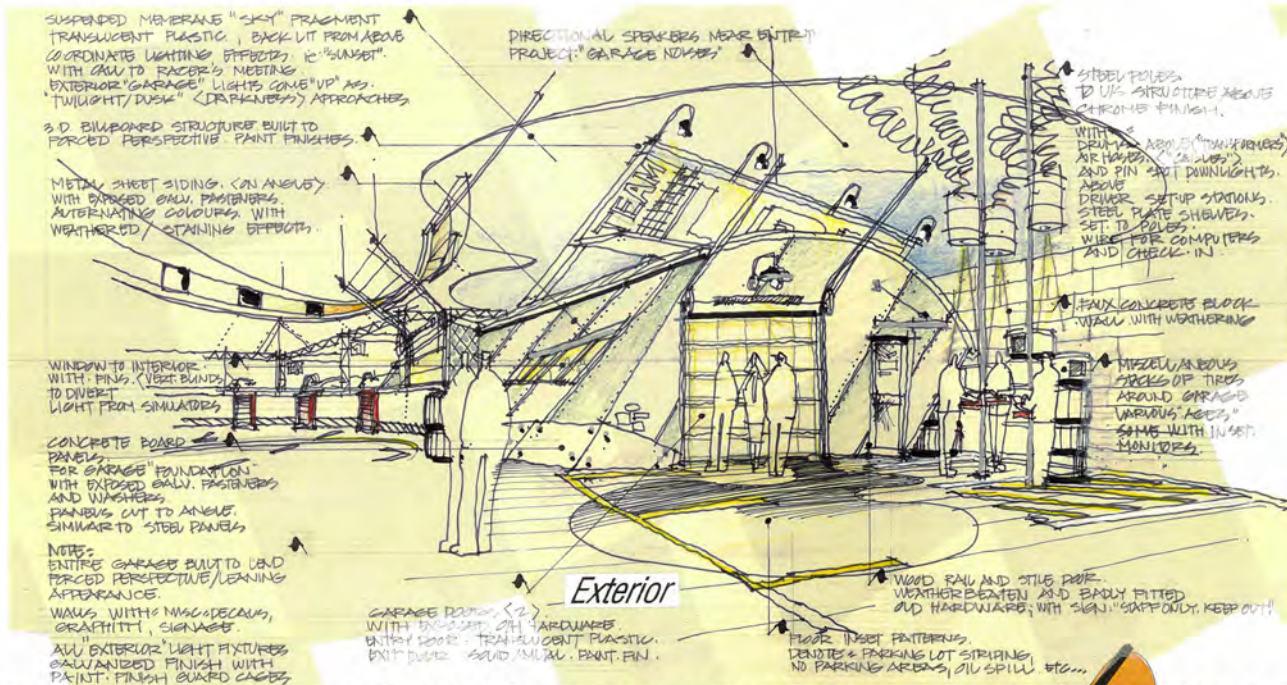
26 K SF, Las Vegas \$ 30 M, 60 K SF

Billboard LIVE!

2000 (Miami)



Initial Concept Team Member



Garage

NASCAR Silicon Motor Speedway

Prototype and Mall of America Location

Bloomington, Minnesota

\$ 840 K, 5.7 K SF

L.B.E. Technologies Ltd.

1997

Concept Prototype Designer

Motion based simulators / Retail Venue

INTERIORS

1998

East Grand Forks Rebuilding Center

Holiday Mall, Tenant Space
East Grand Forks, Minnesota
\$ 108 K, 9 K SF
Sienna Corporation Ltd.
1998



WINNER Invited Competition

Concept Design, Design Development

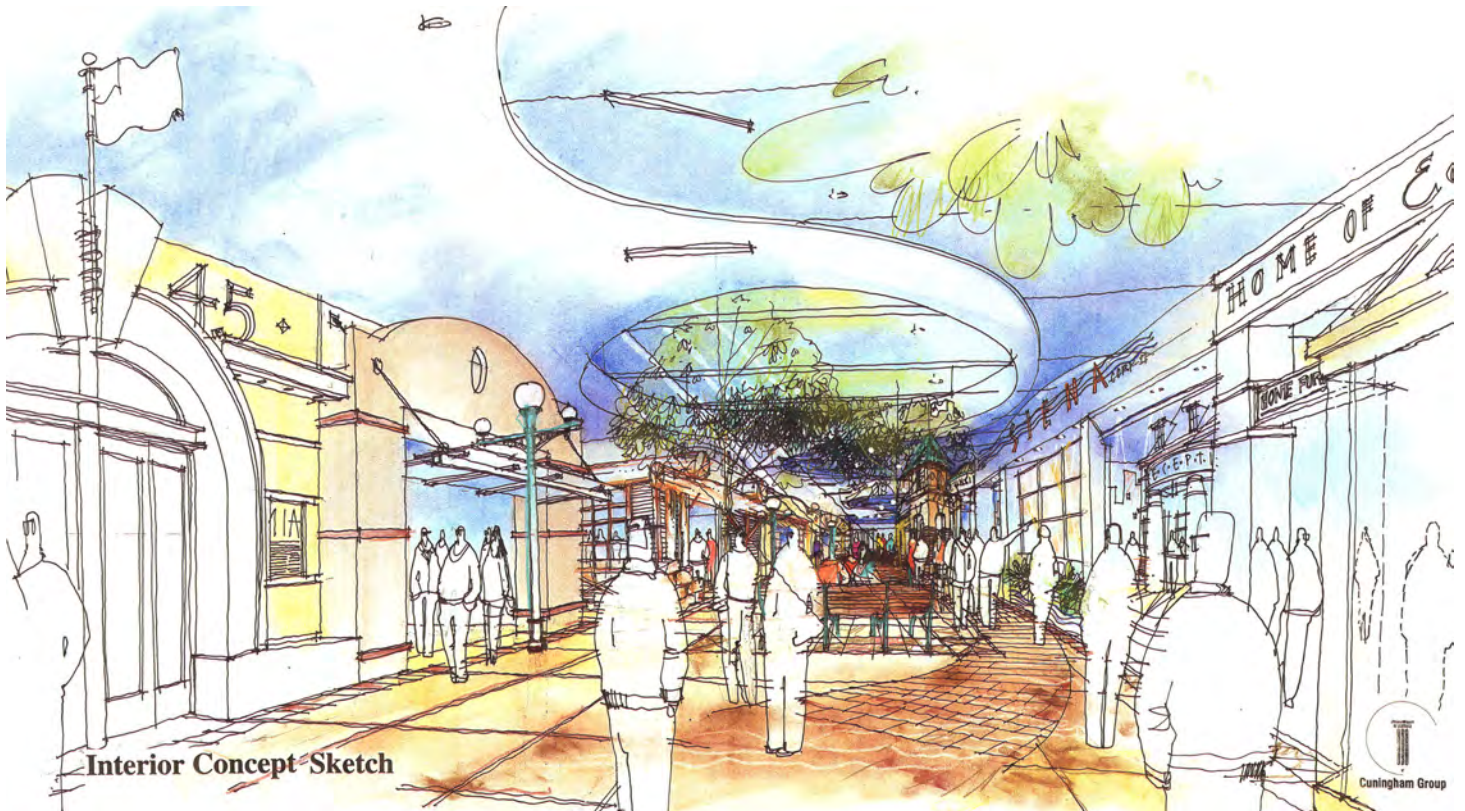
1996

"Fathoms" Restaurant Proposal

Windsor Casino
Windsor, Ontario
(Un-built)



Concept Design



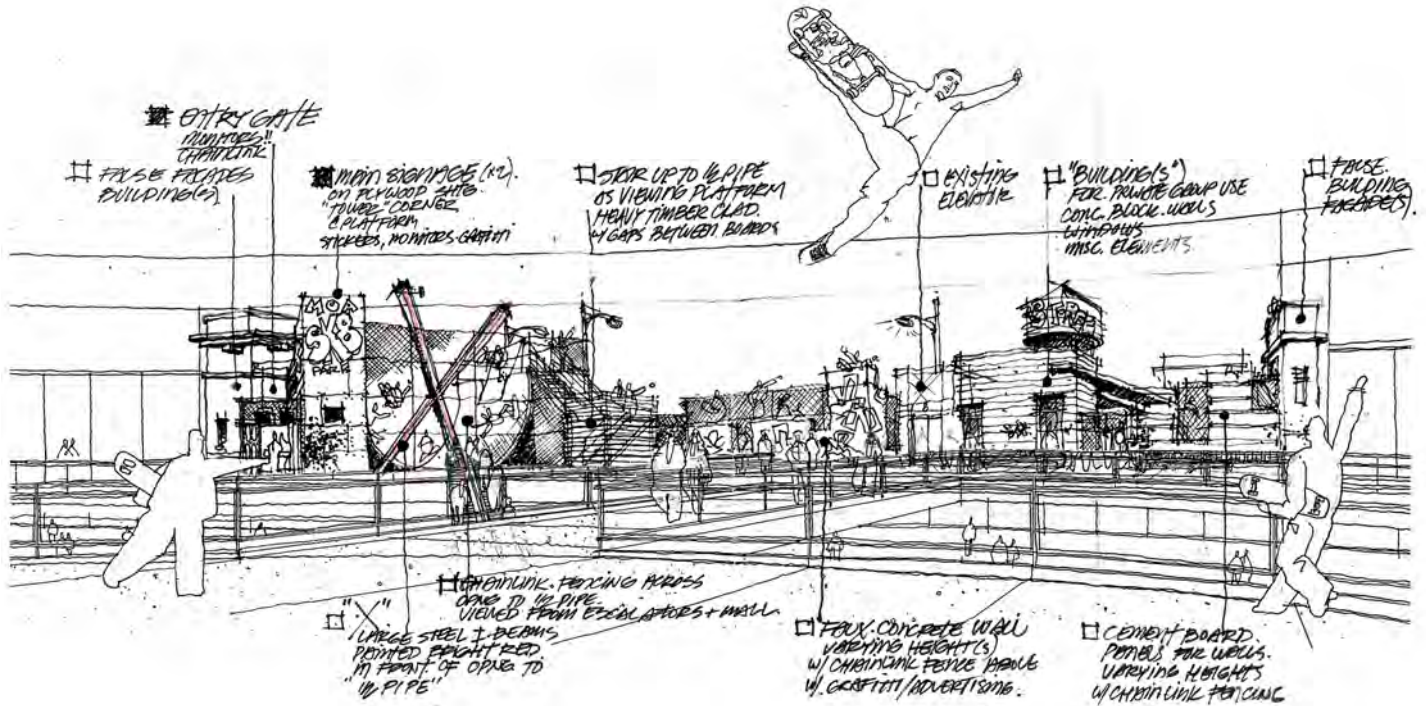
1996

Holiday Mall

Public Space Renovation
East Grand Forks, Minnesota
\$ 40 K, 2.7 K SF
City of East Grand Forks
1998

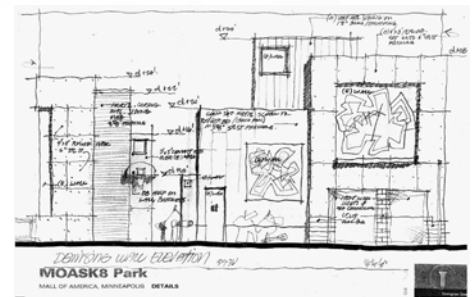
Concept Design, Design Development

INTERIORS



MOA SK8

New Indoor Skateboarding Park
Mall of America
Minneapolis, Minnesota
8 K SF



Concept Design, Design Development

1995

PBSC (Phase 2)

TD Center, 19th Floor
Winnipeg, Manitoba
\$ 65 K, 165 M2
PBSC Computer Training
1995

Project Architect

Design through Contract Administration

1993

Banker's Hall Dinner Theatre

389 Main Street, C.B. of C. Building
Winnipeg, Manitoba
\$ 3.0 M, 2500 M2
Theatricom
Jeff Skinner

Project Architect

Preliminary Design, Budget development of theatre within heritage building.

INTERIORS

1993

TRAF

New Headquarters
Johnston Terminal Building
“at the Forks”
Winnipeg, Manitoba
\$ 200 K, 560 M2
*Teacher's Retirement Allowances
Fund Board*
1994



Project Architect
New offices in heritage building for client
with high public profile.

1992

Restaurant Dubrovnik

New Dance Club for
Existing, 4- star, riverside restaurant.
Winnipeg, Manitoba
Mr. Milan Bodriga

Project Architect
Preliminary Design

1992

TD Center

19th and 29th Floors
Winnipeg, Manitoba
\$ 10 K
Bentall Property Management
1990

Project Architect
Building Code issues resolution
pertaining to Multi-Tenant Leasing

Aggasiz North

Laboratory Renovation
Winnipeg, Manitoba
D. Ramsey and G. Kruszynski
1993

Architectural Consultant
Owner/Self-build project

1991

PBSC Training Center

TD Center, 19th Floor
Winnipeg, Manitoba
\$ 140 K, 560 M2
PBSC Computer Training
1992

Project Architect
Design through Contract Administration

Metropolitan Life

TD Center, 19th Floor
Winnipeg, Manitoba
\$ 75 K, 300 M2
Metropolitan Life
1991

Project Architect
Code review and local administration

Milton D. Rhymer & Associates

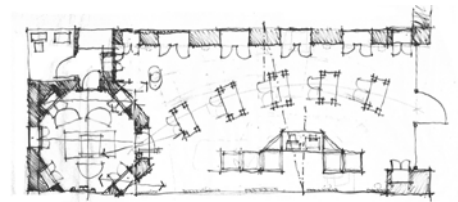
New Office Building
Winnipeg, Manitoba
\$ 450 K, 800 M2
Milt Rhymer

Architect
Preliminary Design

INTERIORS

1991

Folli Follie
Madison Avenue
New York, NY
\$ 25 K, 200 M2
Cougar Capital Ltd.
1992



Concept Design

Folli Follie
Retail Outlets:
TD Center, Winnipeg
Sherway Mall, Toronto
1st Canadian Place, Toronto
Cougar Capital Ltd.
1992

Project Architect
North American Sites for
European World-Wide jewelry chain.
Design through Contract Administration.

1990

TD Center Phase 1B
TD Center, Concourse Level.
Winnipeg, Manitoba
\$ 50 K
Bentall Property Management
1992

Project Architect

1988

Federal Industries
31st to 33rd Floors
TD Center
Winnipeg, Manitoba
\$ 216 K, 180 M2
Federal Industries Ltd.
1989

Architectural Team
Code issue resolution for 3-storey inter-
connected floor space at top of high-rise
office tower with: Design Profile Ltd.

Tai - Chi Association
Building Search. Tenant Space
Winnipeg, Manitoba
\$12 K, 100 M2
*Taoist Tai-Chi Association of Manitoba,
North-End Branch*

Architectural Consultant for
Owner's building review team.

